

EzWedge



Table of contents

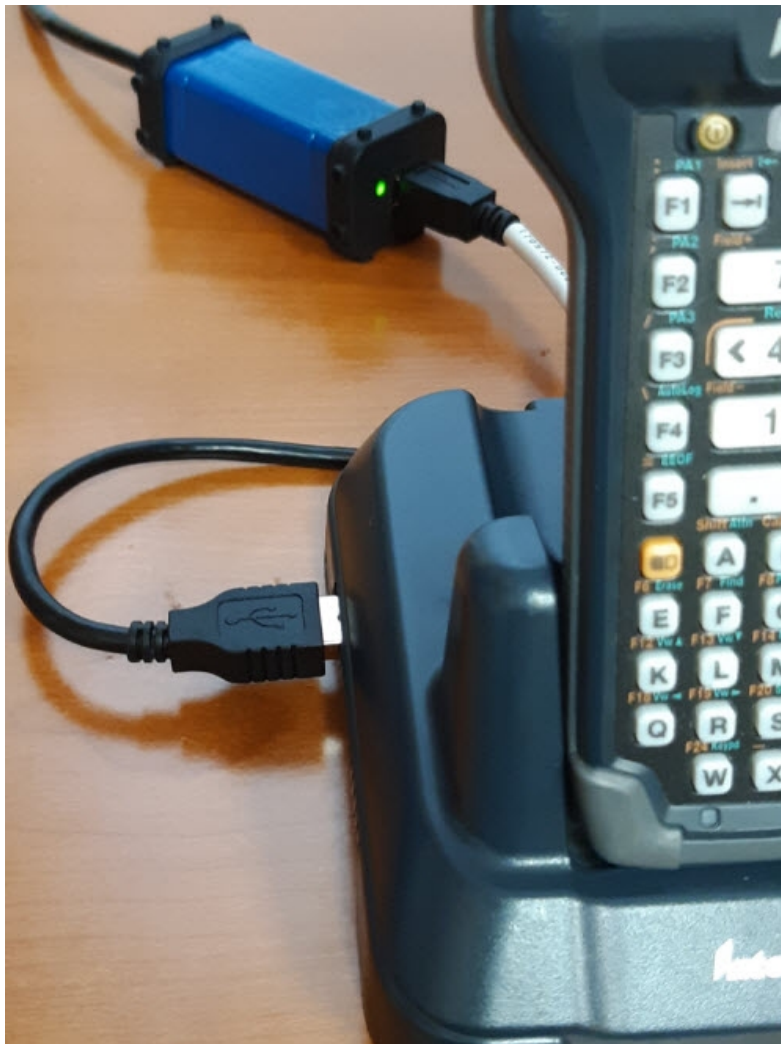
EzWedge	3
Install EzWedge (Note: If not using DHCP then refer to the section on Setting up the IP Address for Your Scanner)	4
Setting up the IP Address for Your Scanner	8

EzWedge

This program has been developed to allow both wireless or wired data transfer between an Intermec/Honeywell Device and a PC. EzWedge is a good replacement option for Windows Mobile Device Center (WMDC) since it makes use of an Ethernet connection rather than a USB connection and does not use WMDC for its connection to the PC.

There are several requirements that have to be met in order for EzWedge to work with a PC.

1. Must use the latest version of Maximo/Vista Scanners with the Options Program installed.
2. Must have an Ethernet Module installed on the dock and plugged into the same network as the PC is connected to.
3. If you have older CK3A, CK3B, or CN50 units, you will require a special driver install for your older unit in order to work with the Ethernet Adapter. Please contact support@mss-software.com for more information.
4. Install and setup EzWedge on the PC where you wish to transfer data.
5. Setup IP address and port in Options Program menu of the each scanner to match EzWedge.
6. If not using DHCP on the scanner, then you will have to assign a IP address to each scanner.

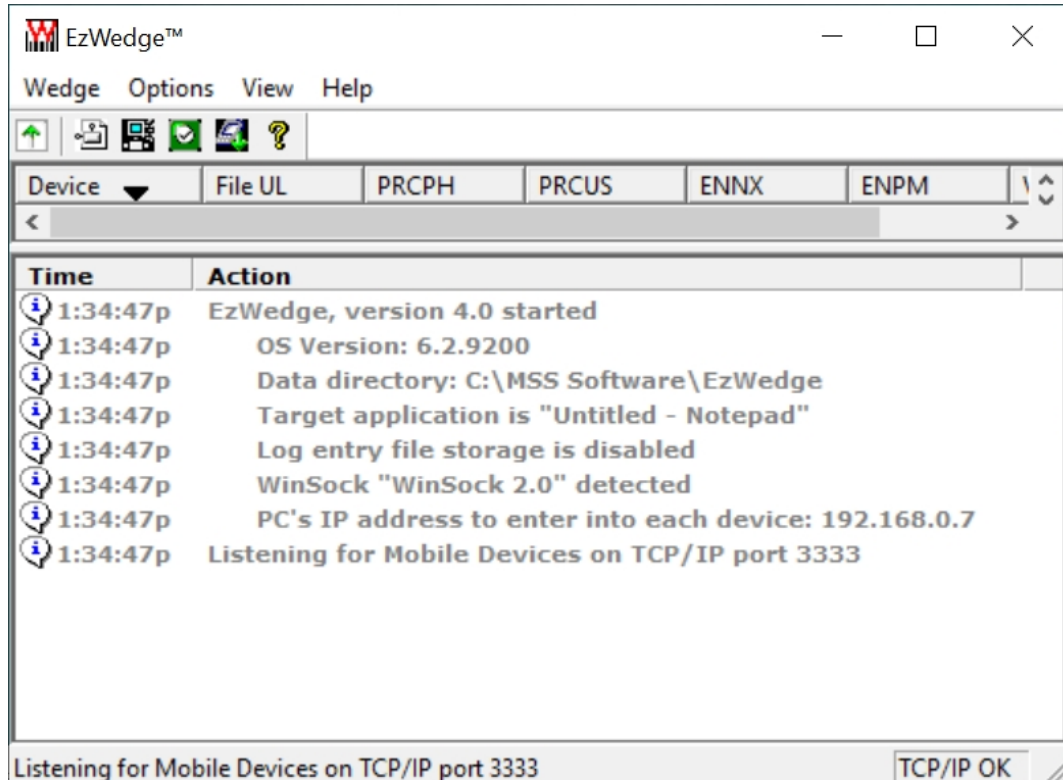


Example of an Ethernet Module Hookup

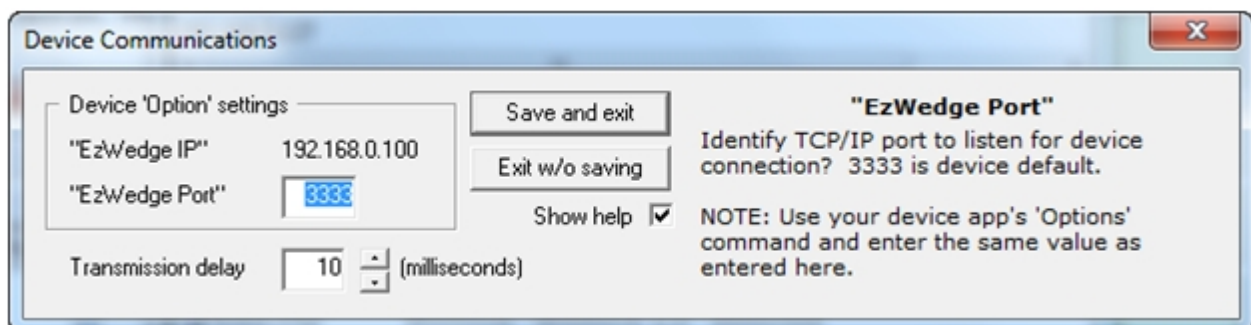
Install EzWedge (Note: If not using DHCP then refer to the section on Setting up the IP Address for Your Scanner)

Install EzWedge on the PC you will be using to interact with VISTA or Maximo. No other program is necessary other than EzWedge. Start the program once installed and follow the steps below:

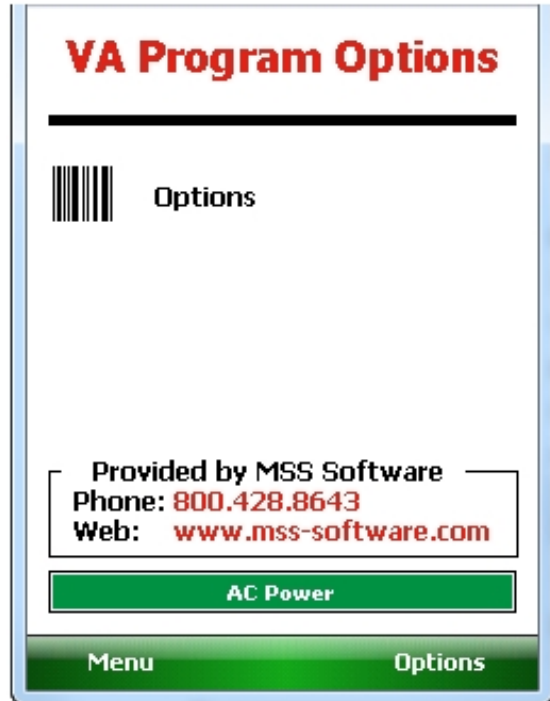
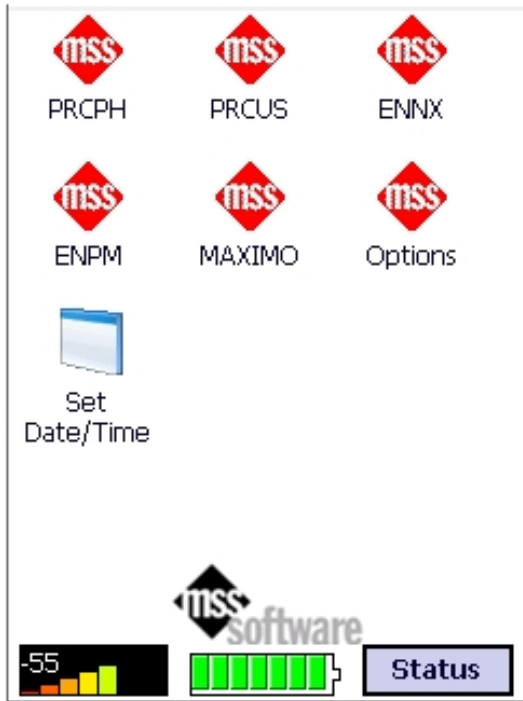
1. Start EzWedge



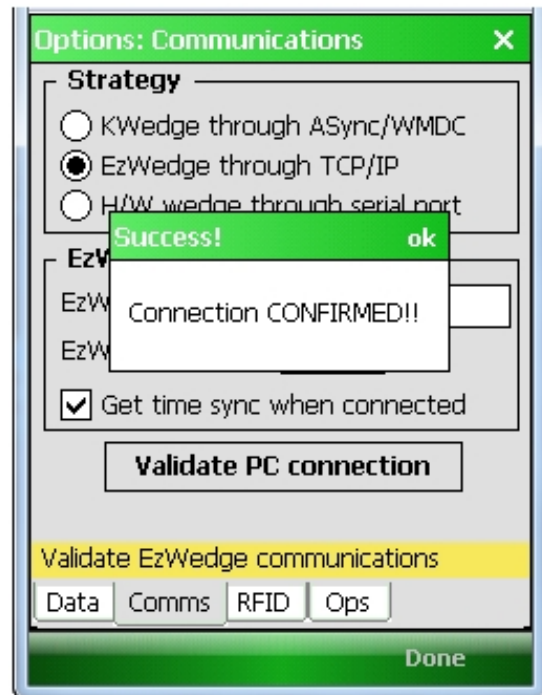
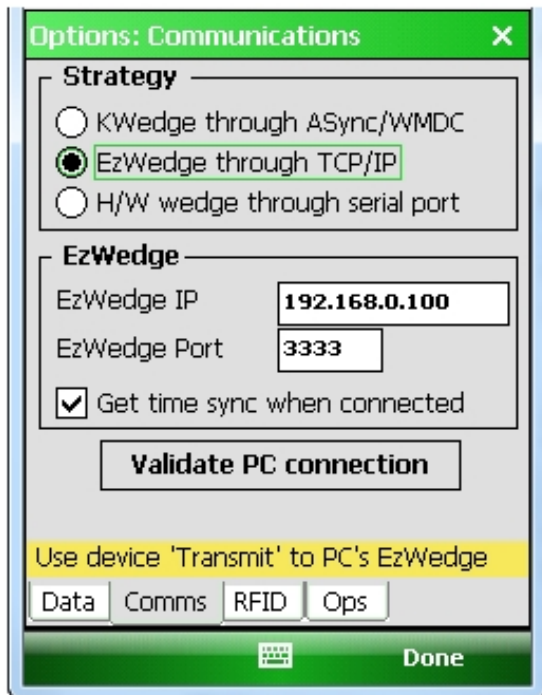
2. You may notice that "Action" screen will show a little warning sign that the Target App (for example, Notepad) is not running and there can be no data transfer. Your Target app will eventually be Vista. However, during testing, you should make Notepad the Target.
3. The other thing you need to look for is in the action column where it lists the PC's IP address (may have to widen the screen). You can also find this by clicking on Options|Device Communications. Make note of this because you need to put this IP address in your scanner devices so that they can communicate.



4. Now go back to the Main Menu of the Scanner and Pick Options, then Options again and type in the password 00000.

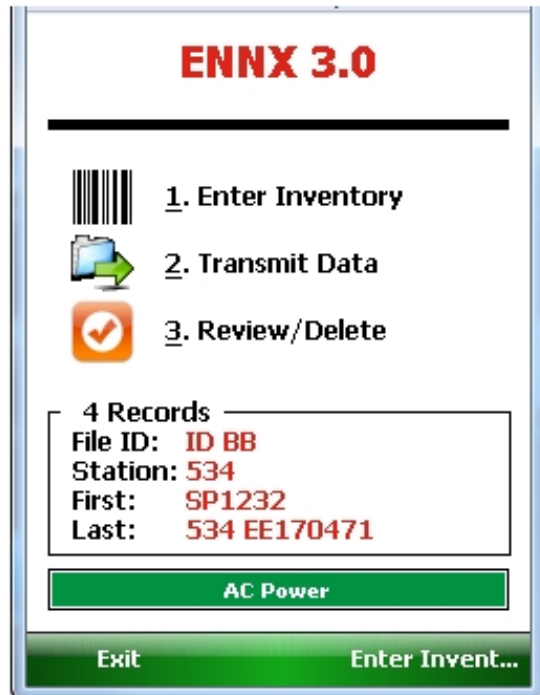
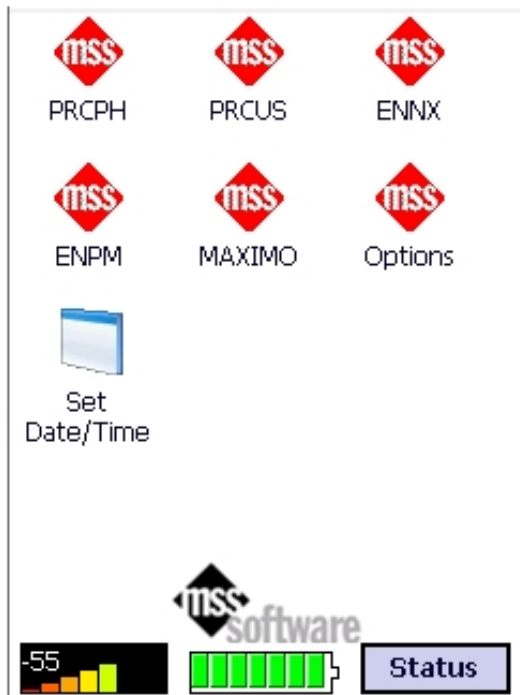


- After you type in the Password, then you will click on OK and then click on the "Comms" tab. On Strategy, click EzWedge through TCP/IP. In the EzWedge Portion you will put in the IP Address of the PC that you found through EzW earlier. Before you click on **Validate PC Connection**, attach the Ethernet Adapter to the side of the Dock and attach an Ethernet cable from your network to it. Make sure that the USB cable is **NOT** plugged in. Now set the scanner into the dock and wait a few minutes for your server to assign it a IP Address. Then click on the **Validate PC Connection**.

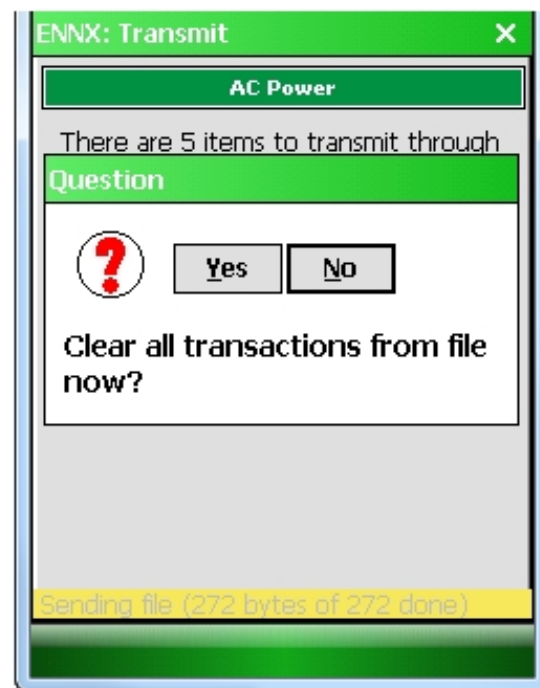
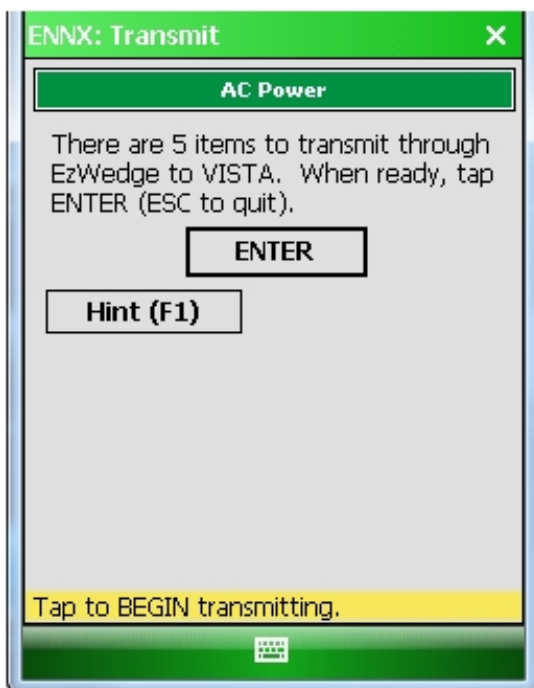


- This will confirm if you have a good connection to transfer data or not. If you have success then you can move onto the next portion of actually trying to transfer data from one of the programs such as ENNX. Go ahead and save your settings and click Done, then Menu, and then Exit. This will put you back again to the Main Menu.
- At Main Menu, click the program of your choice and collect some data. When finished Esc back to the

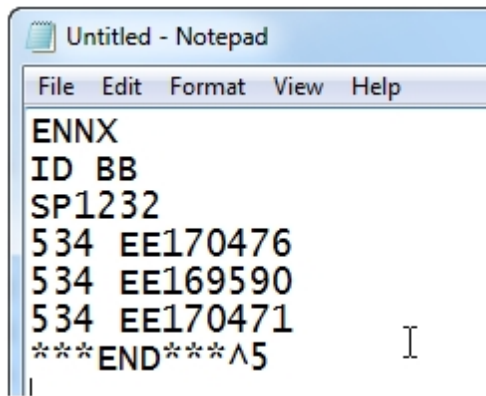
prompts to Transmit Data.



- Select 2. Transmit Data. Then make sure your scanner is in the Dock and then click on Enter when ready.



- The data will be transferred into Notepad and you will see it appear:



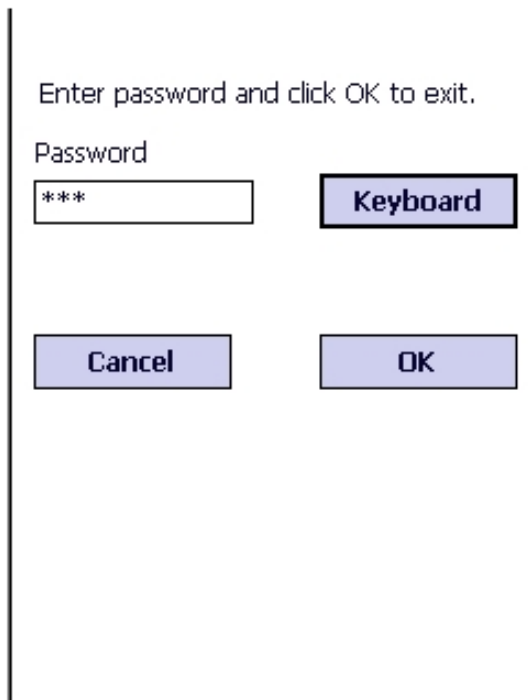
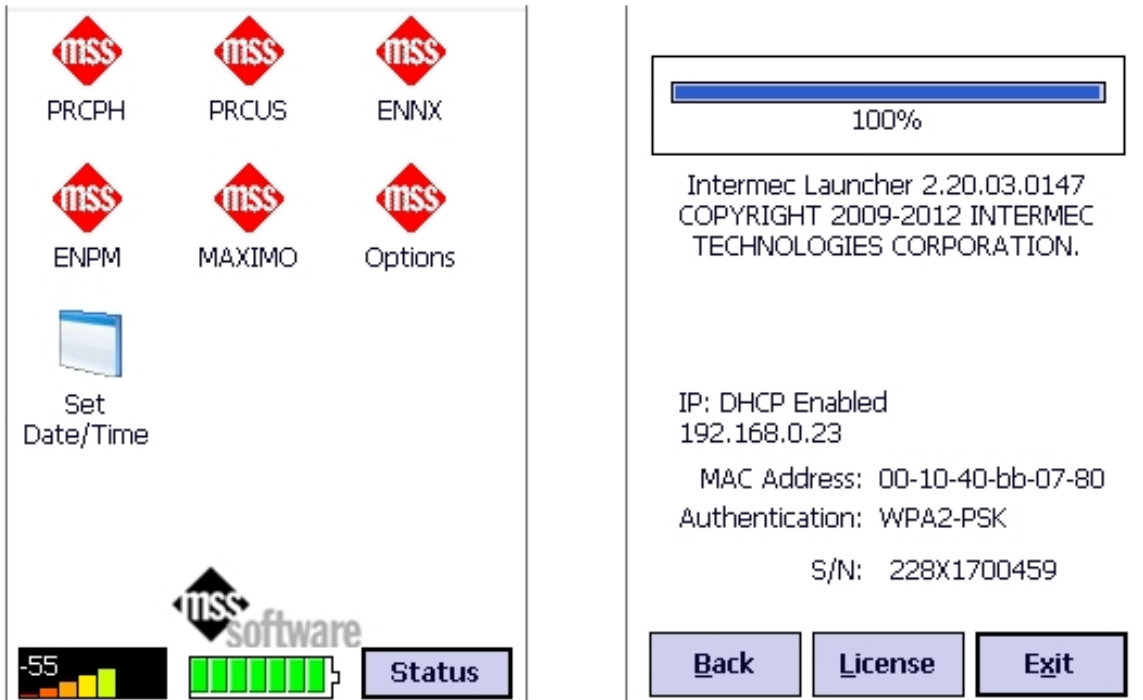
```
Untitled - Notepad
File Edit Format View Help
ENNX
ID BB
SP1232
534 EE170476
534 EE169590
534 EE170471
***END***^5
```

10. We recommend that you now change the target to VistA and navigate to where VistA is ready to receive data from the scanner, then send the data again just to be sure everything is working correctly.
11. If everything worked OK, then you are ready to move to the Wireless setup which is really no different than wired Ethernet. This may or may not be allowed in your facility.
12. To Setup WiFi, you will need special permission from IT and instruction from MSS Software. Please call us.

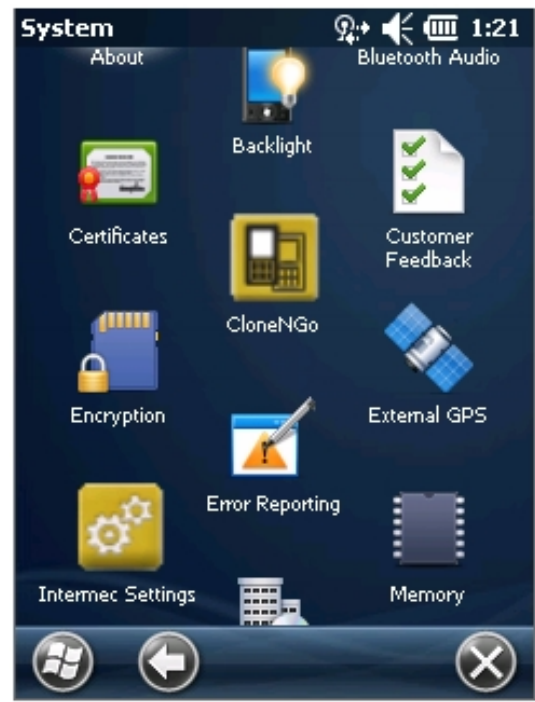
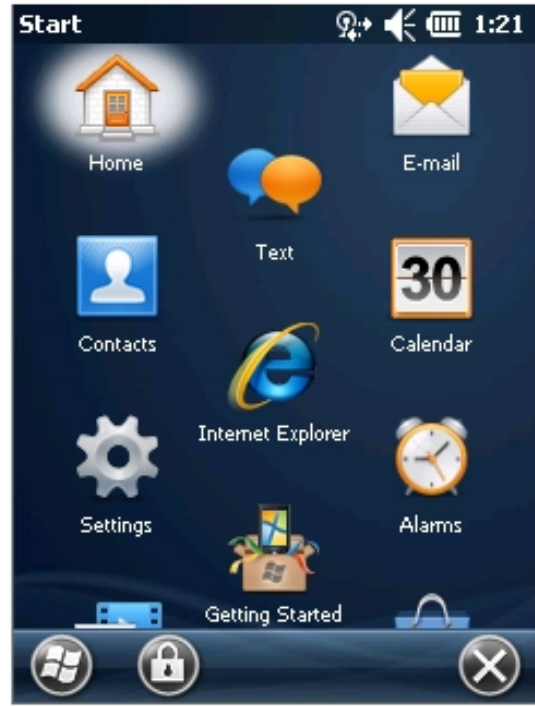
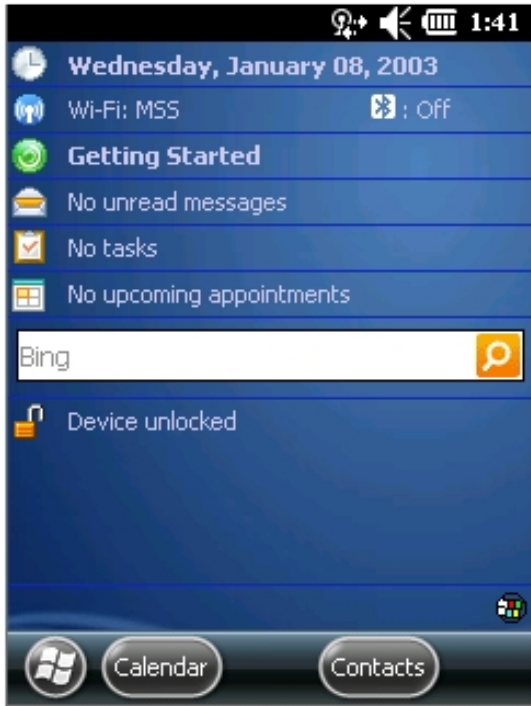
Setting up the IP Address for Your Scanner

If you are not using DHCP and need to assign an IP address to the CK3 or CN51 then you will need to exit the Launcher and set that up.

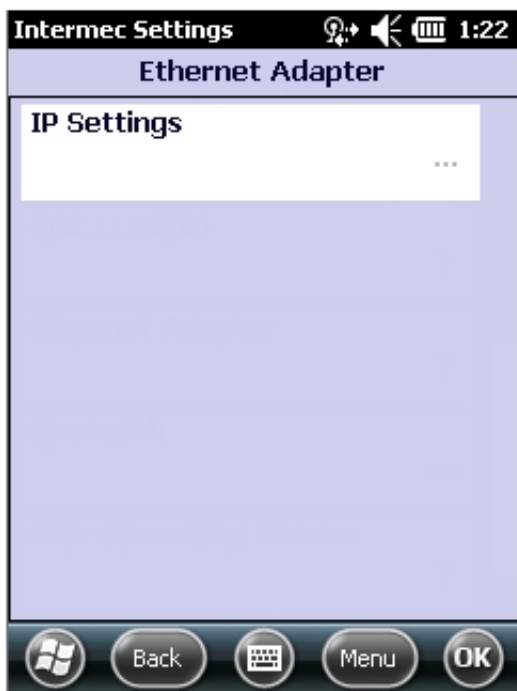
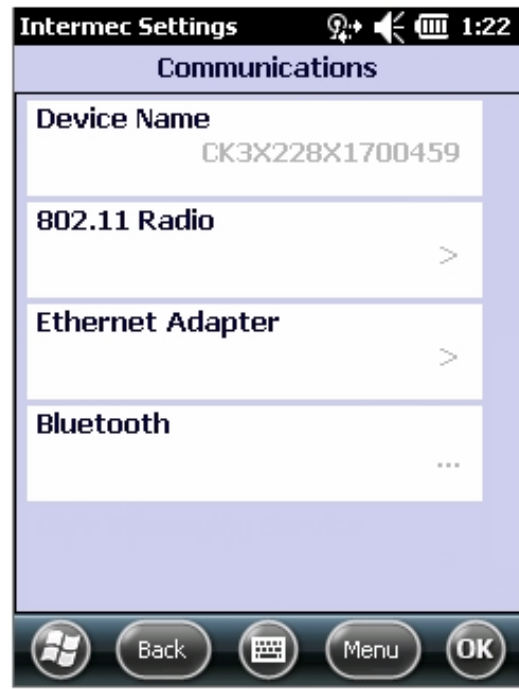
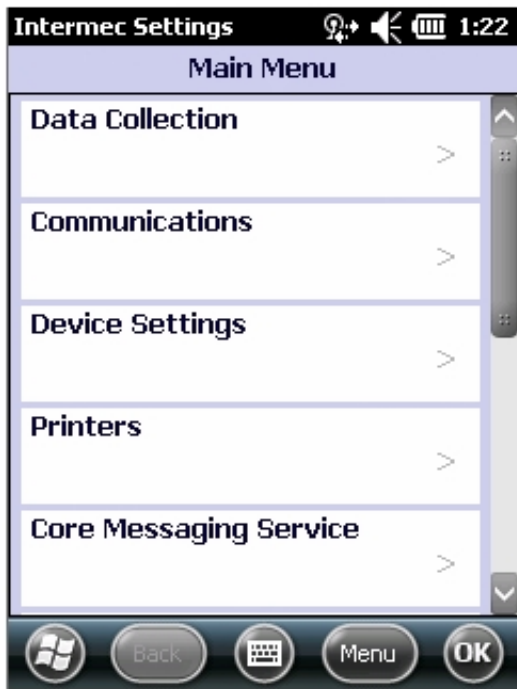
First, go to the main menu where all the apps are shown and select Status then Exit. Enter the Password (123) to Exit.



From the Windows Desktop, Select the Windows Flag, then Settings, System and then Intermecc Settings.



From the Main Menu select Communications then Ethernet Adapter and IP Settings.



You will uncheck DHCP and add an IP Address and Subnet Mask and Default Router, etc. Save the Settings and go back into Intermecc Launcher or simply reboot the device.

