



# General Corded Scanner



CipherLab's reliable and affordable handheld, corded scanners are designed to help accelerate productivity while minimizing total cost of ownership. CipherLab offers you ideal devices, which make the work easier with fast, accurate barcode scanning in retail, healthcare, manufacturing, and enterprise environments.

# General Corded Scanner



## Comfortable and Powerful

### Delivering Outstanding Service and Value

Wherever handheld scanners are used, whether it's on the shop floor, at the checkout counter, in the manufacturing line, or in the documentation center, they must be comfortable and safe for the users and deliver undeniably accurate scans all day long. More importantly, they should be cost-effective to operate.

CipherLab designs and manufactures the industry's top handheld scanners to provide outstanding reliable service for workers and deliver a high return on investment (ROI). Reliability, user comfort, and power consumption 50% lower than competitor's devices on average make CipherLab scanners the ideal choice for long-lasting value in any industry.

### 1070

Designed to provide an affordable and reliable solution for overwhelming scanning demands on shop floors and at checkout stands, the CipherLab 1070 CCD scanner helps businesses streamline workflow and boost work productivity with consistent, accurate data capture. Its aesthetically designed lightweight form factor fits in nicely with any retail setting – even high-end boutiques. The ergonomic handle grip offers all-day comfort for intensive scanning tasks. Together with 3-year warranty, the 1070 ensures not only reliable capture of data and long-lasting performance, but also a significantly lowered total cost of ownership – offering a high return on investment for any retail business.



### 1000 1090+

When it comes to reading a variety of symbologies and printed materials, CipherLab gives you the 1000 and 1090+. These CCD scanners not only deliver consistently accurate data capture in any retail environment, they also eliminate misreading clustered or poorly printed barcodes. Both are ideal for close scanning of wide barcodes with the 1090+ scanning up to 9mm and the 1000 reading high resolution barcodes up to 3mil. Both contact scanners come with smart ergonomic design enhanced with a thermoplastic polyurethane (TPU) rubber boot to give users a comfortable grip and long-lasting durability. Their imager built with no moving parts together with lower power consumption and a five-year warranty make them the perfect choice for reliable performance.



### 1100 1105

For manufacturing companies looking for scanners which are powerful, versatile and rugged, the CipherLab 1100 and 1105 linear imaging scanners would be the choice to go. Designed to endure the harsh working environment of manufactory factories, these CCD scanners carry no moving parts and are built with rugged double-injection molded TPU. They are also test-proven to withstand multiple 2 m (6.5 ft.) drops onto concrete and backed by CipherLab's five-year warranty to ensure long-lasting and reliable service. Aside the rugged build, both the 1100 and 1105 offer accurate data capture of multiple symbologies – with the 1100 to read high density barcodes as small as 3mil, which makes it ideal for tracking smaller parts and components marked by tiny labels.



### 1200

Ideal for manufacturing applications, the CipherLab 1200 laser scanner quickly and accurately reads barcodes up to 64 cm (12ft.) away – allowing you to work smarter and faster. Small size, ergonomic design, and light weight make the 1200 scanner easy and comfortable to use all day long.





## PC Software to Custom-Configure Scanner to Any Environment

CipherLab ScanMaster/ScanManager software provide comprehensive tools to configure any scanner, such as enabling and disabling auto-sense mode, choosing edit format and symbology types, plus more. With ScanMaster/ScanManager, scanners can be easily customized to fit every working environment. ScanMaster/ScanManager for PC is included with all CipherLab scanners.

## CipherLab - the Scanner Pioneer

### Leader in the Industry

CipherLab leads the industry with high-quality, rugged scanners that are designed to meet the specific needs of users in a wide range of environments. We acquired our leadership position through more than twenty years of designing and manufacturing scanners, from our first CCD barcode scanner released in 1991 to our most recent announcements of powerful, versatile handheld scanners.

### Taking Care of Our Customers

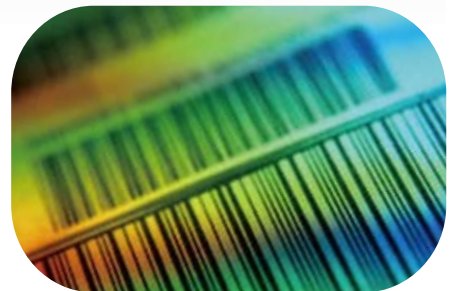
Our customers trust the experience we've gained from working with many different industries and providing them scanning solutions to help boost productivity with low TCO. Our scanners can be found in retail, medical, transportation, manufacturing, and financial sectors. That's why we understand the needs of both the industries scanners are used in and the people who handle them all day long. We back our reputation for quality and reliability with a 3 to 5-year warranty on our non-laser handheld scanners.

### Extensive Research and Development

Innovative engineering and design is supported with extensive research and development in optics, electronics, and communications technology. Our R&D engineers ensure operating satisfaction from proof-of-concept to production-line products.

### Internationally Recognized Quality

Our commitment to the highest manufacturing quality is recognized around the world by users and businesses, which depend on the daily performance of our scanners. We operate under the ISO 9001 quality standards and ISO 14000 environmental standards certified by international organizations. You can trust CipherLab scanners to deliver dependable operation with a low TCO and high ROI. Our products are recognized around the world for their work and business value.



# General Corded Scanner



1070

1000

1090+

1100

1200

Performance	Category	CCD contact scanner	CCD contact scanner	CCD contact scanner (for codes up to 90mm wide)	Linear imaging scanner	Laser Scanner
Optical sensor		1500 pixels	2048 pixels		3648 pixels	Laser
Light source		Red LED (623 nm)	Red LED (660 nm)	Red LED (650 nm)	Red LED (630 nm)	Visible laser diode(650±15 nm)
Resolution		4 mil	3 mil	4 mil	3 mil	4 mil
Depth of field 13 mil barcode		0 to 3cm / 0 to 1.2 in.	0 to 1cm / 0 to 0.4 in.	0 to 5cm / 0 to 2 in.	2.5 to 20 cm / 1 to 7.9 in.	1 to 63 cm / 0.4 to 25 in.
Scanning angle		Pitch ±70° Skew ±40°		Pitch ±70° Skew ±70°		Pitch ±70° Skew ±32.5°
PCS		Minimum 45%	Minimum 30%			
Scan rate		100 scans / second				35 ± 5 scans / second
Auto-sense mode		n / a			Yes	n / a
Interfaces supported		Keyboard wedge,USB	RS232, Keyboard wedge, Wand emulation (except 1000), USB HID, USB Virtual Com, IBM 4683/4694			
Barcodes supported		Codabar, Code 39, Code 93, Code 128, GS1 DataBar (RSS), Industrial 2 of 5, Interleave 2 of 5, Matrix 2 of 5, MSI, Italian and French Pharmacodes, Plessey, Telepen, UPC / EAN / GS1-128, and more				
Programmable features		Data editing, interface selection, symbology configuration				
Language support		US and UK English, French, Italian, Belgian, Norwegian, Swedish, Spanish, Portuguese, German				
Physical	Dimension L x W x H	16.7 x 7.5 x 5.7 cm / 6.6 x 3 x 2.2 in.	17 x 8 x 4.8 cm / 6.7 x 3.1 x 1.9 in.	18.2 x 10.4 x 6.4 cm / 7.2 x 4.1 x 2.5 in.	14.5 x 9.3 x 7.4 cm / 5.7 x 3.7 x 2.9 in.	14.5 x 9.3 x 7.4 cm / 5.7 x 3.7 x 2.9 in.
	Weight without cable	104 g / 3.7 oz.	265 g / 9.3 oz. (w/cable)	148 g / 5.2 oz.	165 g / 5.8 oz.	190 g / 6.7 oz.
	Color	Black	Ivory or Black	Ivory	Light gray or dark grey	
	Switch	Rubber switch			Micro switch	
Electrical	Voltage	+5V ±5%			+5V ±10%	+5V ±5%
	Power consumption Standby / Operating	35 mA / 180 mA	40 mA / 95 mA	45 mA / 105 mA	60 mA / 190 mA	40 mA / 175 mA
User Environment	Operating temperature	0 ° to 50°C / 32° to 122°F				0 ° to 40°C / 32° to 104°F
	Storage temperature	-20° to 60°C / -4° to 140°F				-40° to 60°C / -40° to 140°F
	Operating/storage humidity Non-condensing	10% to 90% / 0% to 95%	10% to 90% / 5% to 95%			
	Impact resistance Multiple drops onto concrete	1.2 m / 4 ft. Drops	1.0 m / 3.3 ft. Drops		2m / 6.6 ft. Drops	1.2m / 4 ft. Drops
	Electrostatic discharge	Conforms to ± 15 kV air discharge and ± 8 kV contact discharge				
EMC regulation	BSMI, CCC, CE, C-Tick, FCC, IC, KCC		BSMI, CE, C-Tick, FCC, IC, KCC		BSMI, CE, C-Tick, FCC, IC	BSMI, CE, C-Tick, FCC, IC, KCC
Configuration	Setup options include Windows®-based ScanMaster/ScanManager, by direct connection or printing out barcode settings					
Accessories	includes attached cable			Detachable cable, desk / wall mount included with 1100 / 1200 Optional auto-sense stand for 1100		
Warranty	3 years		5 years		1 year	

ACCESSORIES

Auto-sense Stand



1100/1105 & 1200 Holder

Can be used on tabletop  
or wall mounted



**CIPHER LAB**  
Smarter

**HEADQUARTERS**  
CipherLab Co., Ltd.  
12F, 333 Dunhua S. Rd., Sec.2  
Taipei, Taiwan 10669  
Tel +886 2 8647 1166  
Fax +886 2 8732 3300  
www.cipherlab.com

**CipherLab China**  
J Room, 4F, No.728 West Yan'an  
Road, Changning District, Shanghai  
China 200050  
Tel +86 21 3368 0288  
Fax +86 21 3368 0286

**CipherLab USA**  
2552 Summit Avenue  
Plano, Texas USA 75074  
Tel +1 469 241 9779  
Toll Free 888 300 9779  
Fax +1 469 241 0697

**CipherLab Central Europe**  
Willicher Damm 143-145  
41066 Mönchengladbach  
Germany  
Tel +49 2161 56230 0  
Fax +49 2161 56230 22