

# ePrint Mobile Data Collection and Printing System

## Collects, Tags and Tracks

This data collection software employs the use of a portable barcode scanner and printer to collect data on equipment, as well as tag equipment that is not already encoded with a barcode label. ePrint makes use of the DOD standard UID system parts marking, which uses 2D Data Matrix barcodes. Thus, each label contains the following information encoded into the 2D Barcode: Manufacturer's #, Part #, and Serial #. Since the barcode is very small, this information does not take up much space on the label.

## Portable Label Printing

Information about a particular piece of equipment such as, the Location or UIC, the Cage Code or Mfg #, Part # or Model #, and Serial # is either scanned into the data collection device or can be typed in from the keyboard. If the asset does not already contain a barcode, then a label can be printed on the spot using the attached portable printer. In addition, a memo field exists in case other data needs to be collected.



Figure 1. Portable barcode reader (Intermec CN3) and printer (Zebra P4T) used with the ePrint software.

## Simple Data Collection & Transfer

The whole data collection process is easy and error free and allows the user to collect information about the equipment, asset or instrument and save it into a file within the barcode reader. The data is transferred automatically using a communications utility called Data Transporter, which works in conjunction with Microsoft Active Synchron.

The ePrint portable data collection application is very simple to use and set up. Users can track equipment from one location to the next using this technology and send updates in the form of a comma delimited, tab delimited, or .csv file format. These files can then be loaded into a database or master spreadsheet to keep up-to-date information on your assets.



2929 Eskridge Road  
Suite TS-2  
Fairfax, VA 22031

Toll Free: 800-428-8643  
www.mss-software.com  
sales@mss-software.com

## Lookups

The reader program allows you to load a lookup table that has the model, manufacturer and cage code. The lookup table would show the list of models starting with the first three characters you typed in, along with the manufacturer's name and cage code. The user selects the model from the list, and the cage code is automatically filled in, saving you a lot of time and increasing your accuracy when trying to identify assets before printing a UID label.

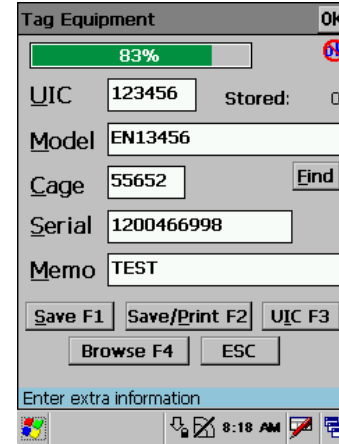


Figure 2. Sample screen shot of the barcode reader.

	A	B	C	D
1	<b>Loc</b>	<b>MFG</b>	<b>Part#</b>	<b>Serial</b>
2	123-24	57163	20045	A123456
3	123-24	11477	1234522	B11254
4	123-24	56589	50051	B14145
5	123-36	57163	200114	B18558
6	123-36	11123	154145	B51145

Figure 3. Sample output in an Excel spreadsheet.

## Pricing

<u>Part #</u>	<u>Description</u>	<u>Price</u>
EPM-CN3	ePrint Mobile System (Full Kit)	\$3,995
EPM-SO	ePrint Software Only	\$1,995

The ePrint Mobile System is a complete kit and includes both hardware and software. MSS Software provides support for 60 days, and offers extended maintenance support for only \$495 per year. The complete system includes the following:

- CN3 with Imager and Accessories
- Zebra P4T with labels and cable
- E-Print software