



Inspector

INSPECTOR



2929 Eskridge Road
Suite TS-2
Fairfax, VA 22031

Tel: 800-428-8643
Fax: 703-783-0319
Web: mss-software.com



MSS Software

- Specializes in developing data collection applications for barcode terminals.
- Sells and rents barcode equipment from major Auto ID manufacturers.
- Has been in business since 1984 and is incorporated in the state of Virginia.





Our Corporate Customers Include:

- **Fortune 500 Companies**
 - General Electric, Honeywell, Lockheed Martin
- **Auto Manufacturers**
 - Ford, Toyota, Honda, General Motors
- **Chemical Companies**
 - Dupont, Wyeth, Merck, Bristol Myers





Our Government Customers Include:

Federal:

- CIA and FBI
- U.S. Army, Navy, Marines, and Air Force
- National Institutes of Health and the VA Hospitals

State and County:

- Delaware, Illinois, and Ohio
- Florida, New Jersey, and Pennsylvania



Inspector

- Inspect and Track inspections of all equipment.
- Uses Barcodes to make inspections automatic and fast.
- Equipment, locations, and status are recorded and updated.
- Uses simple to understand Microsoft Excel.

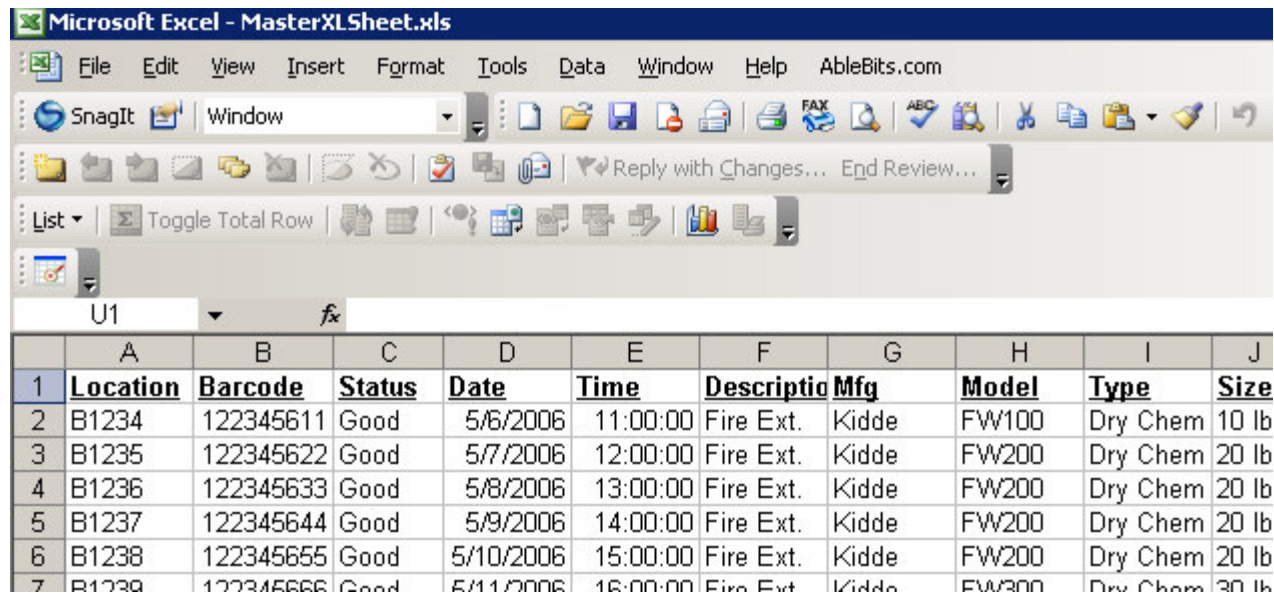


Inspector Consists of:

- A barcode reader to scan the asset and record the location and status.
- Inspector Software on your PC that updates a Master Equipment List using data collected by the barcode readers.
- Label design and printing software to make barcodes labels and sheets.

Master Equipment Table

- You start the whole process by creating and using a Microsoft Excel based Master Equipment Table.



The screenshot shows a Microsoft Excel spreadsheet titled "MasterXLSheet.xls". The spreadsheet contains a table with 10 columns and 7 rows of data. The columns are labeled: Location, Barcode, Status, Date, Time, Description, Mfg, Model, Type, and Size. The data rows show equipment details such as location (B1234-B1238), barcode (122345611-122345666), status (Good), date (5/6/2006-5/11/2006), time (11:00:00-16:00:00), description (Fire Ext.), manufacturer (Kidde), model (FW100-FW300), type (Dry Chem), and size (10 lb-30 lb).

	A	B	C	D	E	F	G	H	I	J
1	Location	Barcode	Status	Date	Time	Description	Mfg	Model	Type	Size
2	B1234	122345611	Good	5/6/2006	11:00:00	Fire Ext.	Kidde	FW100	Dry Chem	10 lb
3	B1235	122345622	Good	5/7/2006	12:00:00	Fire Ext.	Kidde	FW200	Dry Chem	20 lb
4	B1236	122345633	Good	5/8/2006	13:00:00	Fire Ext.	Kidde	FW200	Dry Chem	20 lb
5	B1237	122345644	Good	5/9/2006	14:00:00	Fire Ext.	Kidde	FW200	Dry Chem	20 lb
6	B1238	122345655	Good	5/10/2006	15:00:00	Fire Ext.	Kidde	FW200	Dry Chem	20 lb
7	B1239	122345666	Good	5/11/2006	16:00:00	Fire Ext.	Kidde	FW300	Dry Chem	30 lb

Inspections by Barcode

- Inspections are done using a portable barcode reader.
- Barcode labels are scanned and data is entered



Barcode Scanning – Location

- First—enter the location



Barcode Scanning – Scan Equipment

- Second—scan barcodes of equipment and enter status.



Transfer Data

- Transfer data to your PC.
- Captured data is used in Inspector to Update Master.

Directory : C:\Program Files\CertificationTra ...

File name : 065000.txt

COM port : 12 (1 ~ 255)

Baud rate : 115200

File mode : Auto

Add Return character to each record.

Add Line-Feed character to each record.

Show messages in case of error.

View the received data.

Always show this dialog box.

Keep online for receiving data automatically.

Rolling time : 2 (1 ~ 999 sec)

OK Cancel

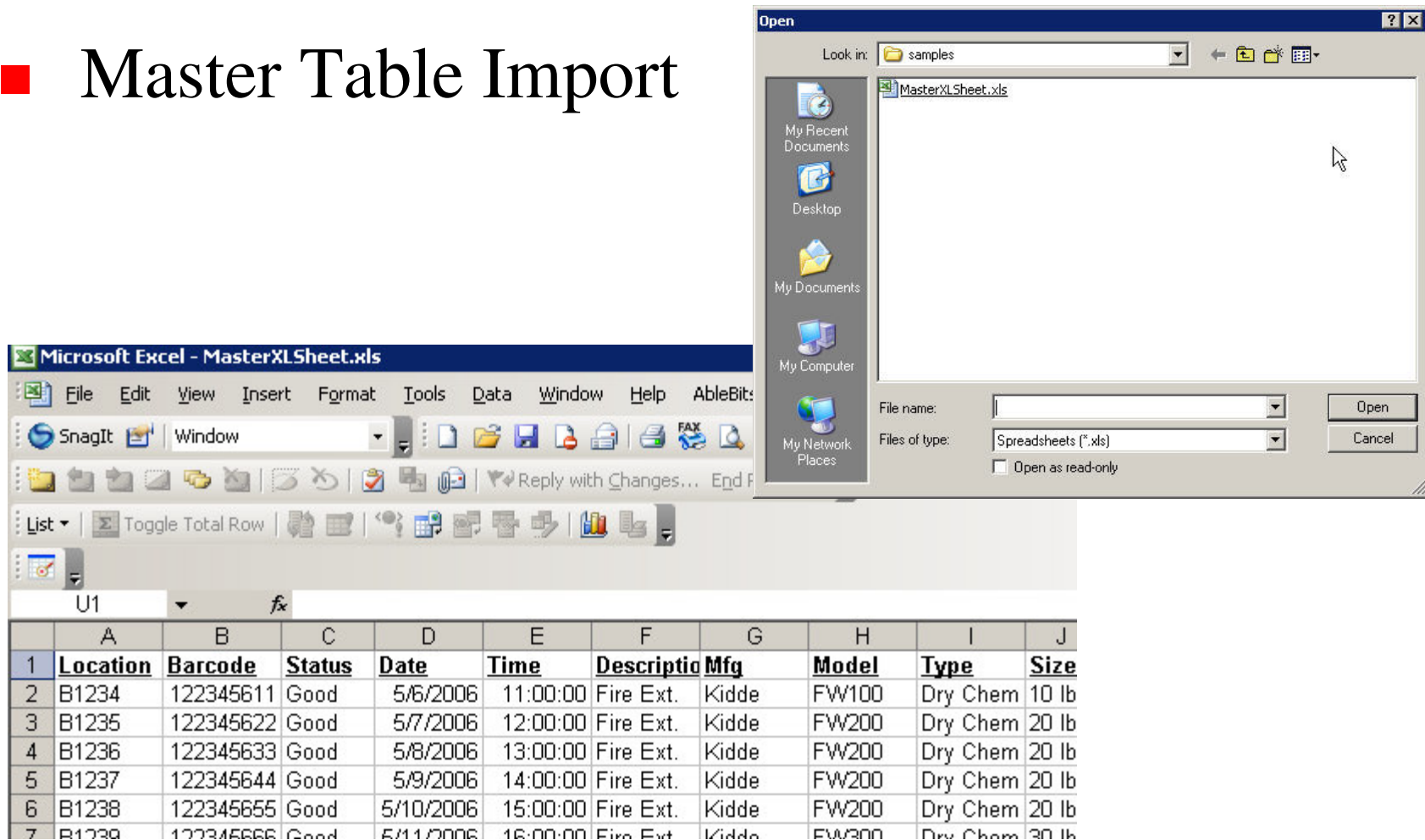


Inspector Main Screen



Select Master Equipment Table

■ Master Table Import

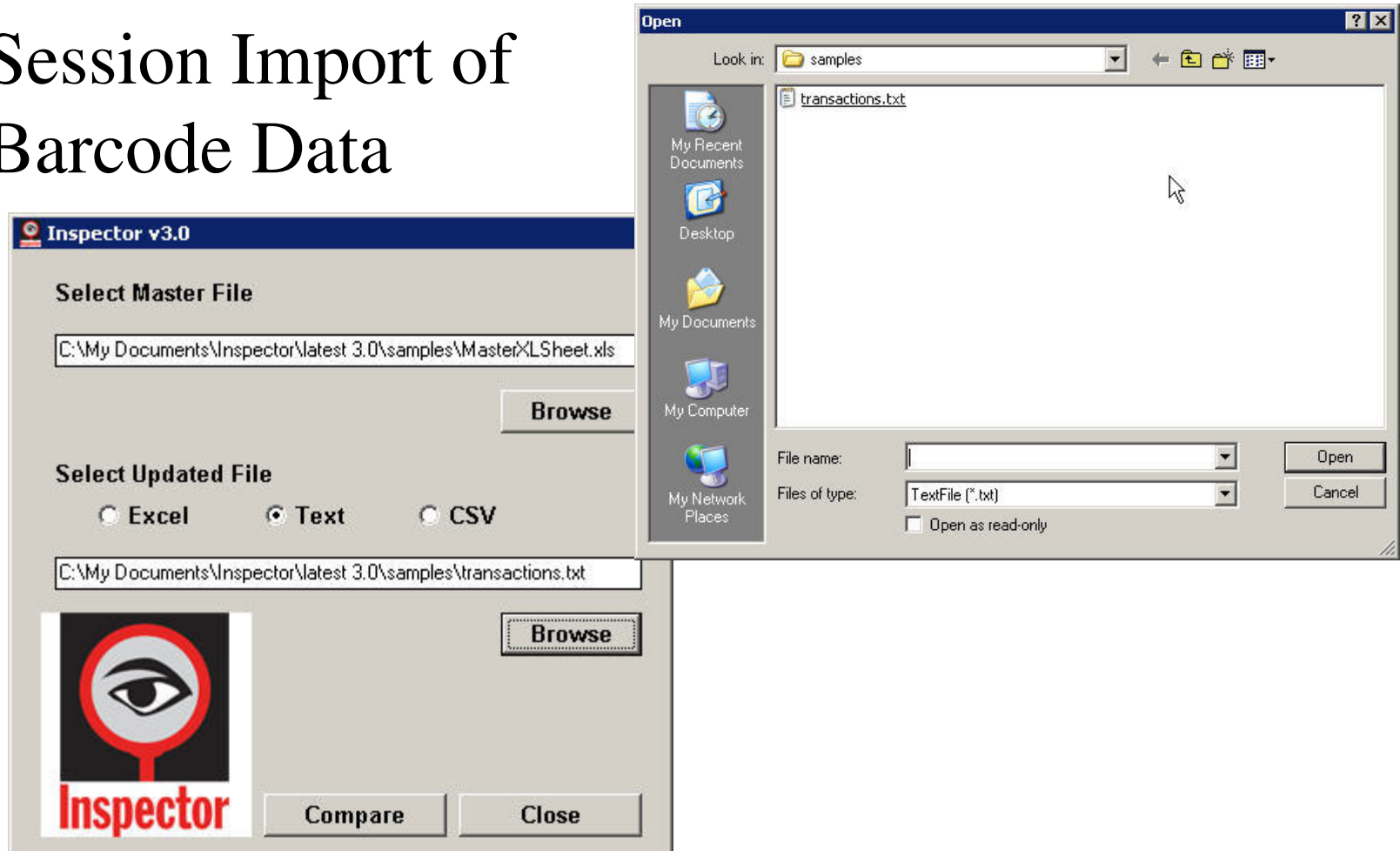


The screenshot displays a Microsoft Excel window titled "Microsoft Excel - MasterXLSheet.xls". An "Open" dialog box is overlaid on the spreadsheet, showing the "samples" folder containing the file "MasterXLSheet.xls". The dialog box includes a "File name" field, a "Files of type" dropdown set to "Spreadsheets (*.xls)", and an "Open as read-only" checkbox. The spreadsheet below shows a table with columns for Location, Barcode, Status, Date, Time, Description, Mfg, Model, Type, and Size. The data includes equipment records such as fire extinguishers (Kidde FW100, FW200, FW300) with their respective barcodes, status, and dates.

	A	B	C	D	E	F	G	H	I	J
1	Location	Barcode	Status	Date	Time	Description	Mfg	Model	Type	Size
2	B1234	122345611	Good	5/6/2006	11:00:00	Fire Ext.	Kidde	FW100	Dry Chem	10 lb
3	B1235	122345622	Good	5/7/2006	12:00:00	Fire Ext.	Kidde	FW200	Dry Chem	20 lb
4	B1236	122345633	Good	5/8/2006	13:00:00	Fire Ext.	Kidde	FW200	Dry Chem	20 lb
5	B1237	122345644	Good	5/9/2006	14:00:00	Fire Ext.	Kidde	FW200	Dry Chem	20 lb
6	B1238	122345655	Good	5/10/2006	15:00:00	Fire Ext.	Kidde	FW200	Dry Chem	20 lb
7	B1239	122345666	Good	5/11/2006	16:00:00	Fire Ext.	Kidde	FW300	Dry Chem	30 lb

Import Barcode Data

- Session Import of Barcode Data



Results of Import

- After the import of the barcode data, all changes are set in bold and displayed at the top of the spreadsheet.
- If a location, status or date and time changes then the results can be quickly viewed.

	A	B	C	D	E	F	G	H	I	
1	Location	Barcode	Status	Date	Time	Descriptio	Mfg	Model	Type	Size
2	B1236	122345633	Need Ser	6/20/2006	12:00:00 PM	Fire Ext.	Kidde	FW200	Dry Chem	20 lb
3	B1234	122345655	Good	6/20/2006	12:00:50 PM	Fire Ext.	Kidde	FW200	Dry Chem	20 lb
4	B1235	122345611	Need Ser	6/20/2006	12:01:35 PM	Fire Ext.	Kidde	FW100	Dry Chem	10 lb
5	B1243	122345600	Good	6/20/2006	12:05:03 PM	Fire Ext.	Kidde	FW100	Dry Chem	10 lb
6	B1242	122345699	Need Ser	6/20/2006	12:06:07 PM	Fire Ext.	Kidde	FW100	Dry Chem	10 lb
7	T1212	F100000000	BAD	12/24/2006	12:06:07 PM					
8	B1235	122345622	Good	5/7/2006	12:05:00 AM	Fire Ext.	Kidde	FW200	Dry Chem	20 lb
9	B1237	122345644	Good	5/9/2006	2:00:00 PM	Fire Ext.	Kidde	FW200	Dry Chem	20 lb
10	B1239	122345666	Good	5/11/2006	4:00:00 PM	Fire Ext.	Kidde	FW300	Dry Chem	30 lb

Results-Removed from Location

- If items were removed from a location then this shows up on a separate spreadsheet tab.
- Eliminated locations or equipment from that area could pose a special problem. Inspector alerts you to this.

Eliminated Locations

	A	B	
1	Location	Barcode	St
2	B1234	122345611	N/
3	B1238	122345655	N/

Barcode Scanning – Options

- You may also load the barcode reader with a lookup table to alert inspector when scanning equipment and conducting inspections.
- Lookups alert inspector to perform special inspections on equipment such as hydro tests.

L
Hydro Date
5/1/2014-Hydro
5/1/2014-Hydro
11/1/2006-Hydro
11/1/2006-Hydro
5/1/2014-Hydro
5/1/2014-Hydro
5/1/2014-Hydro
5/1/2014-Hydro
5/1/2014-Hydro
4/1/2008-Hydro
5/1/2014-Hydro

	A	↓B
1	122345611	11/1/2006-6yr. Test
2	122345655	11/1/2006-6yr. Test
3	122345666	11/1/2006-6yr. Test
4	100000000	11/1/2006-6yr. Test



Import Data to Other Programs

- Import data for use with other programs using standard Microsoft techniques.
- View or use graphs if necessary using Excel analysis techniques.



Fast and Easy Inspections

- Barcodes make inspections fast and easy. Inspector uses simple barcode readers for collecting data.
- Inspector is Excel-based. Excel takes the hassle out of inspections leaving the basis of easily understood inspections.



Support

- MSS Software offers technical support for Inspector software.
- We are available 8:30 am to 5:30 pm, Monday thru Friday, EST.

