



Win10 and WMDC Fix



Table of contents

Win10 and WMDC Fix	3
Tweaks to WMDC	3
Switching USB to Serial Client on CK3X VISTA Kit	3

Win10 and WMDC Fix

Windows 10 may not work correctly with your WinMobile Device. There are a few tweaks you can do to correct this. First we will show you what to do on the side of the PC where you are installing Windows Mobile Device Center. If that doesn't fix it then you will need to use another tweak on the device itself. Here we will show you what to do to change some of the settings on the WinMobile Device.

Tweaks to WMDC

Watch the video below on YouTube and then make the necessary recommended changes.
<https://youtu.be/P4PmL34DQdk>

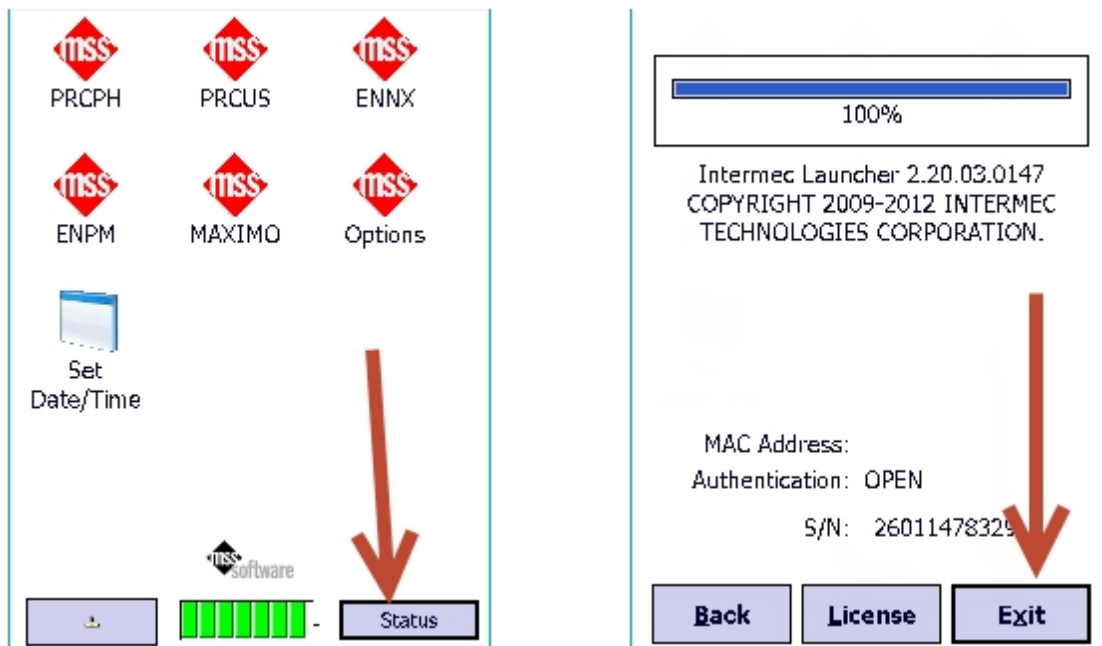
Here are the codes you will use from the video:

```
REG ADD HKLM\SYSTEM\CurrentControlSet\Services\RapiMgr /v SvcHostSplitDisable /t REG_DWORD /d 1 /f
```

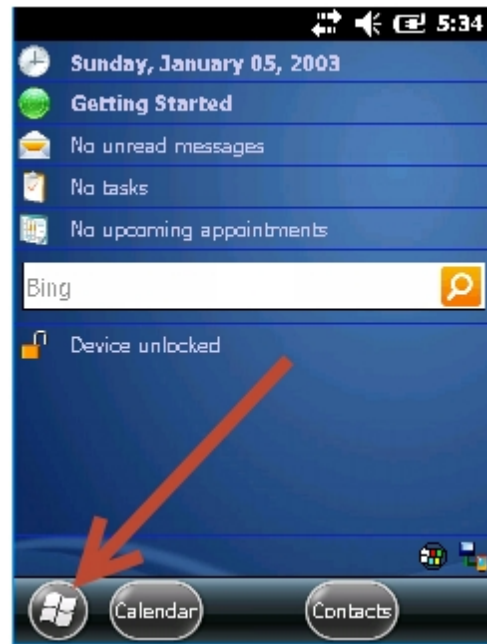
```
REG ADD HKLM\SYSTEM\CurrentControlSet\Services\WcesComm /v SvcHostSplitDisable /t REG_DWORD /d 1 /f
```

Switching USB to Serial Client on CK3X VISTA Kit

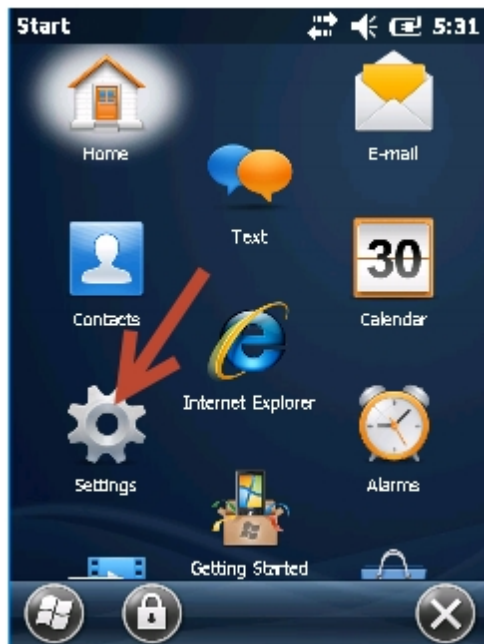
If you are having trouble connecting to Win10 Windows Mobile Device Center using the CK3X default setup, you can try changing the USB setup on the CK3X. This only works on this unit and not the older CK3A s or B s.



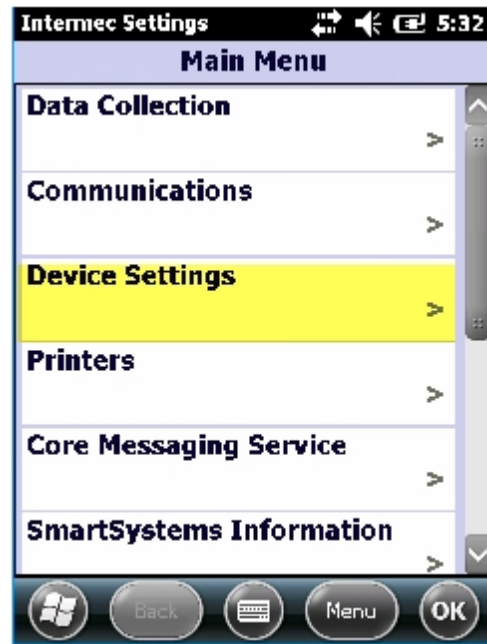
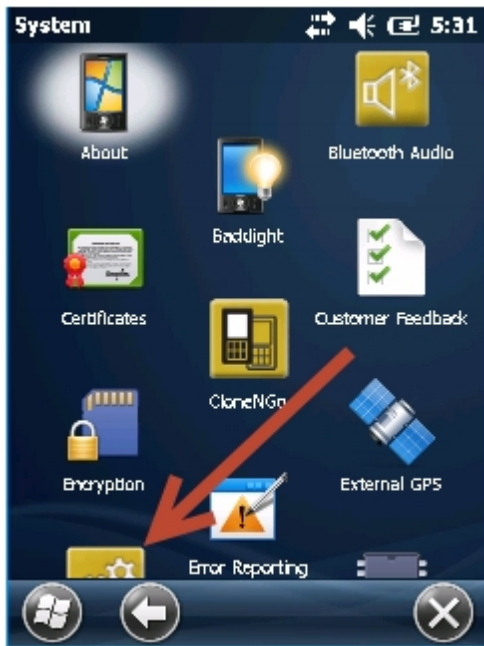
From the Main Menu, click on the Status button. Then click on the Exit button.



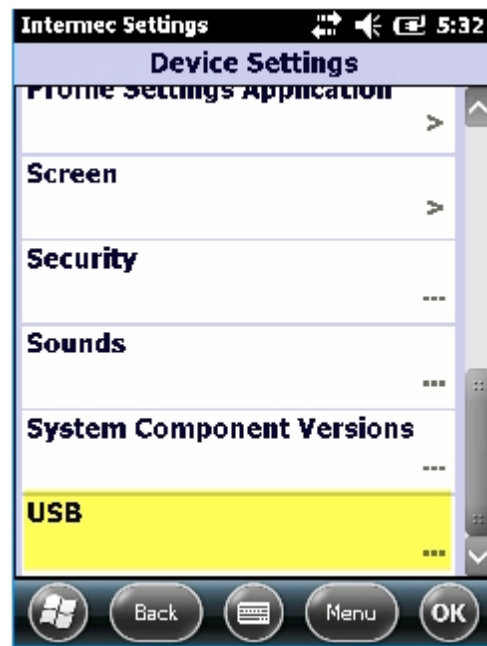
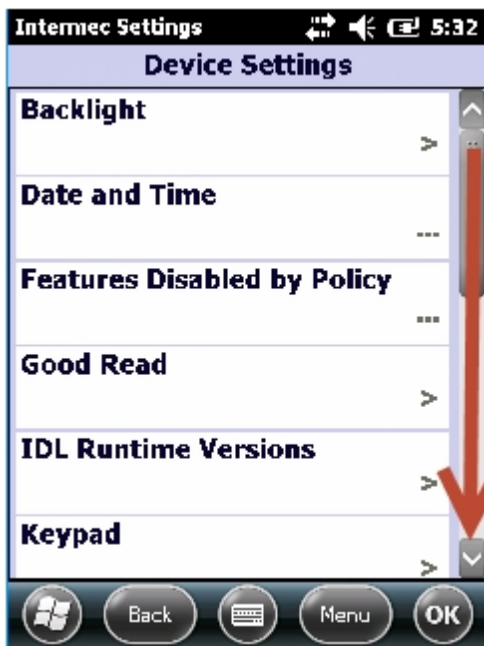
When you see this screen, click on the Keyboard button and type in 123 then click OK. This will take you to the Windows Desktop of the barcode reader. You will next click on the Win Flag Start button.



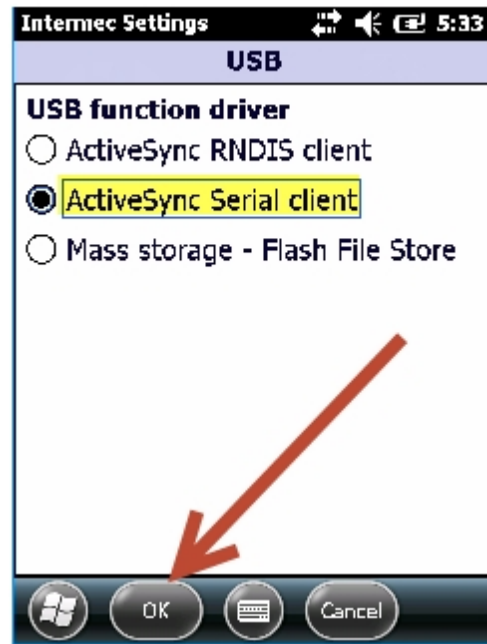
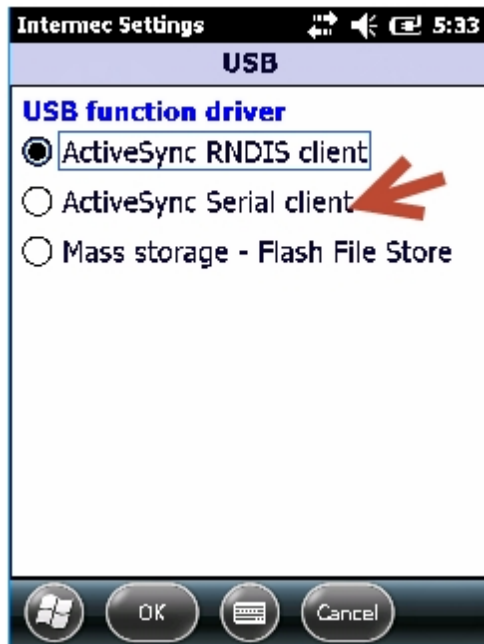
Next click on the Settings, then System.



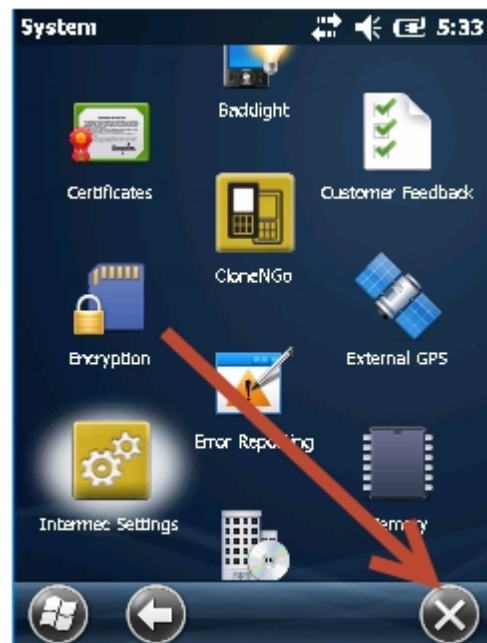
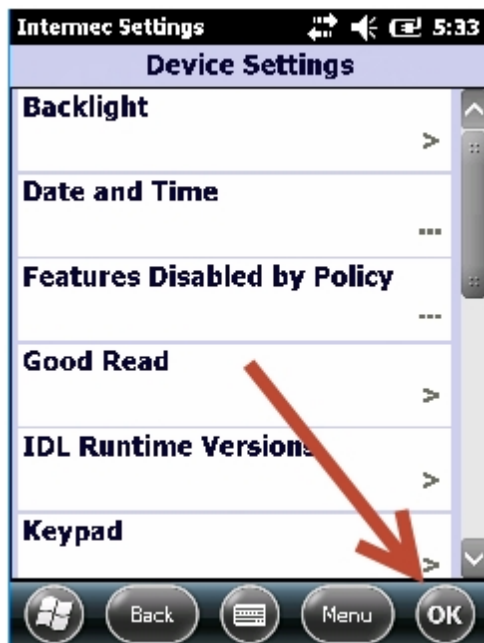
Click on Intermec Settings (icon in lower left) and then Device Settings.



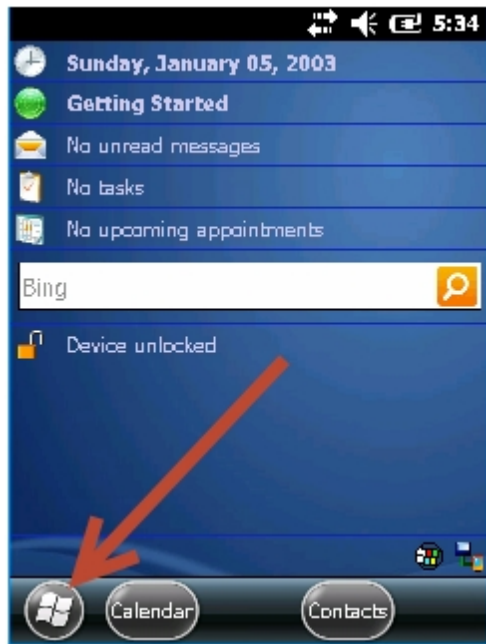
Scroll Down to USB and click on that.



Switch USB – ActiveSync RDIS client to ActiveSync Serial Client then OK



Click OK then X on the System Screen.



Finally, click on Start then scroll down to and click on Intermec launcher to restart the VISTA/MAXIMO menu. Try re-docking your CK3X and let it reconnect to WMDC.