



**Inspector**

# INSPECTOR

---



2929 Eskridge Road  
Suite TS-2  
Fairfax, VA 22031

Tel: 800-428-8643  
Fax: 703-783-0319  
Web: [mss-software.com](http://mss-software.com)



# MSS Software

---

- Specializes in developing data collection applications for barcode terminals.
- Sells and rents barcode equipment from major Auto ID manufacturers.
- Has been in business since 1984 and is incorporated in the state of Virginia.





# Our Corporate Customers Include:

---

- **Fortune 500 Companies**
  - General Electric, Honeywell, Lockheed Martin
- **Auto Manufacturers**
  - Ford, Toyota, Honda, General Motors
- **Chemical Companies**
  - Dupont, Wyeth, Merck, Bristol Myers





# **Our Government Customers Include:**

---

## **Federal:**

- CIA and FBI
- U.S. Army, Navy, Marines, and Air Force
- National Institutes of Health and the VA Hospitals

## **State and County:**

- Delaware, Illinois, and Ohio
- Florida, New Jersey, and Pennsylvania



# Inspector

---

- Inspect and Track inspections of all equipment.
- Uses Barcodes to make inspections automatic and fast.
- Equipment, locations, and status are recorded and updated.
- Uses simple to understand Microsoft Excel.



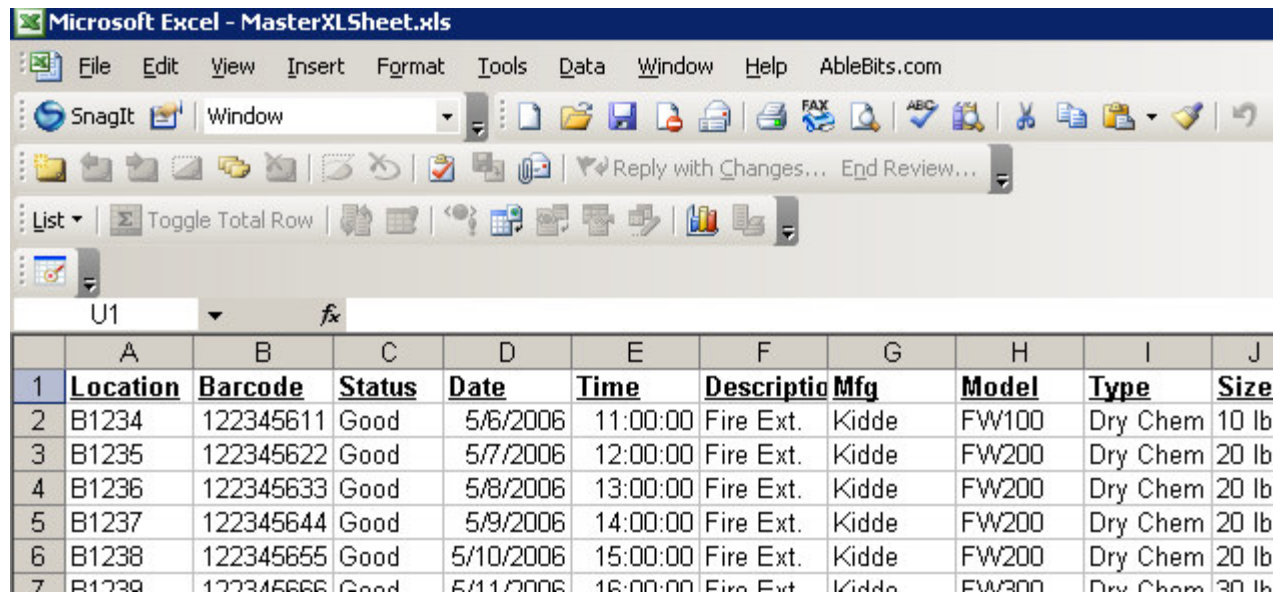
# Inspector Consists of:

---

- A barcode reader to scan the asset and record the location and status.
- Inspector Software on your PC that updates a Master Equipment List using data collected by the barcode readers.
- Label design and printing software to make barcodes labels and sheets.

# Master Equipment Table

- You start the whole process by creating and using a Microsoft Excel based Master Equipment Table.



The screenshot shows a Microsoft Excel spreadsheet titled "MasterXLSheet.xls". The spreadsheet contains a table with 10 columns and 7 rows of data. The columns are labeled: Location, Barcode, Status, Date, Time, Description, Mfg, Model, Type, and Size. The data rows show equipment details such as location (B1234-B1238), barcode (122345611-122345666), status (Good), date (5/6/2006-5/11/2006), time (11:00:00-16:00:00), description (Fire Ext.), manufacturer (Kidde), model (FW100-FW300), type (Dry Chem), and size (10 lb-30 lb).

	A	B	C	D	E	F	G	H	I	J
1	Location	Barcode	Status	Date	Time	Description	Mfg	Model	Type	Size
2	B1234	122345611	Good	5/6/2006	11:00:00	Fire Ext.	Kidde	FW100	Dry Chem	10 lb
3	B1235	122345622	Good	5/7/2006	12:00:00	Fire Ext.	Kidde	FW200	Dry Chem	20 lb
4	B1236	122345633	Good	5/8/2006	13:00:00	Fire Ext.	Kidde	FW200	Dry Chem	20 lb
5	B1237	122345644	Good	5/9/2006	14:00:00	Fire Ext.	Kidde	FW200	Dry Chem	20 lb
6	B1238	122345655	Good	5/10/2006	15:00:00	Fire Ext.	Kidde	FW200	Dry Chem	20 lb
7	B1239	122345666	Good	5/11/2006	16:00:00	Fire Ext.	Kidde	FW300	Dry Chem	30 lb

# Inspections by Barcode

---

- Inspections are done using a portable barcode reader.
- Barcode labels are scanned and data is entered





# Barcode Scanning – Location

---

- First—enter the location



# Barcode Scanning – Scan Equipment

- Second—scan barcodes of equipment and enter status.



# Transfer Data

- Transfer data to your PC.
- Captured data is used in Inspector to Update Master.

Directory : C:\Program Files\CertificationTra ...

File name : 065000.txt

COM port : 12 (1 ~ 255)

Baud rate : 115200

File mode : Auto

Add Return character to each record.

Add Line-Feed character to each record.

Show messages in case of error.

View the received data.

Always show this dialog box.

Keep online for receiving data automatically.

Rolling time : 2 (1 ~ 999 sec)

OK Cancel



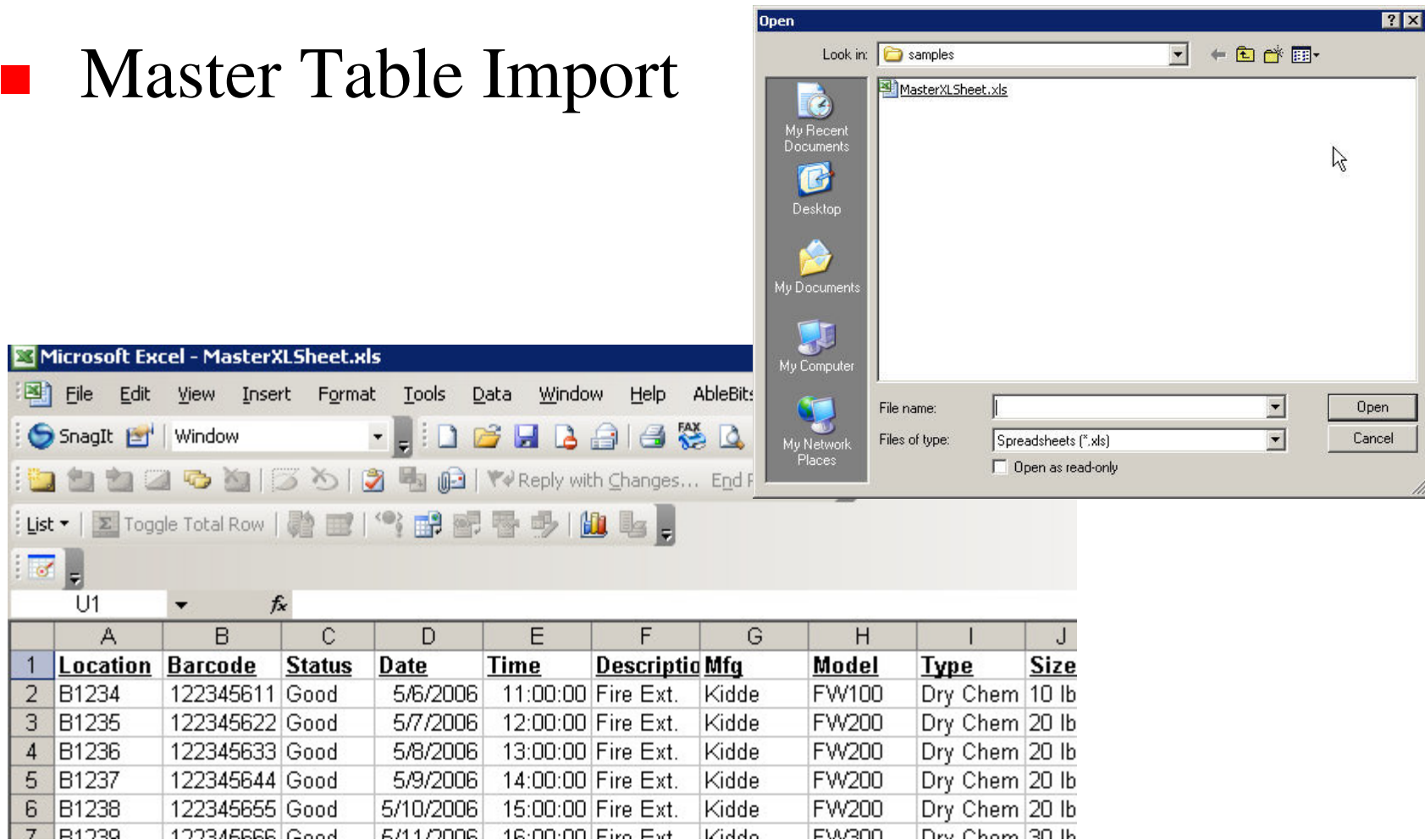
# Inspector Main Screen

---



# Select Master Equipment Table

## ■ Master Table Import

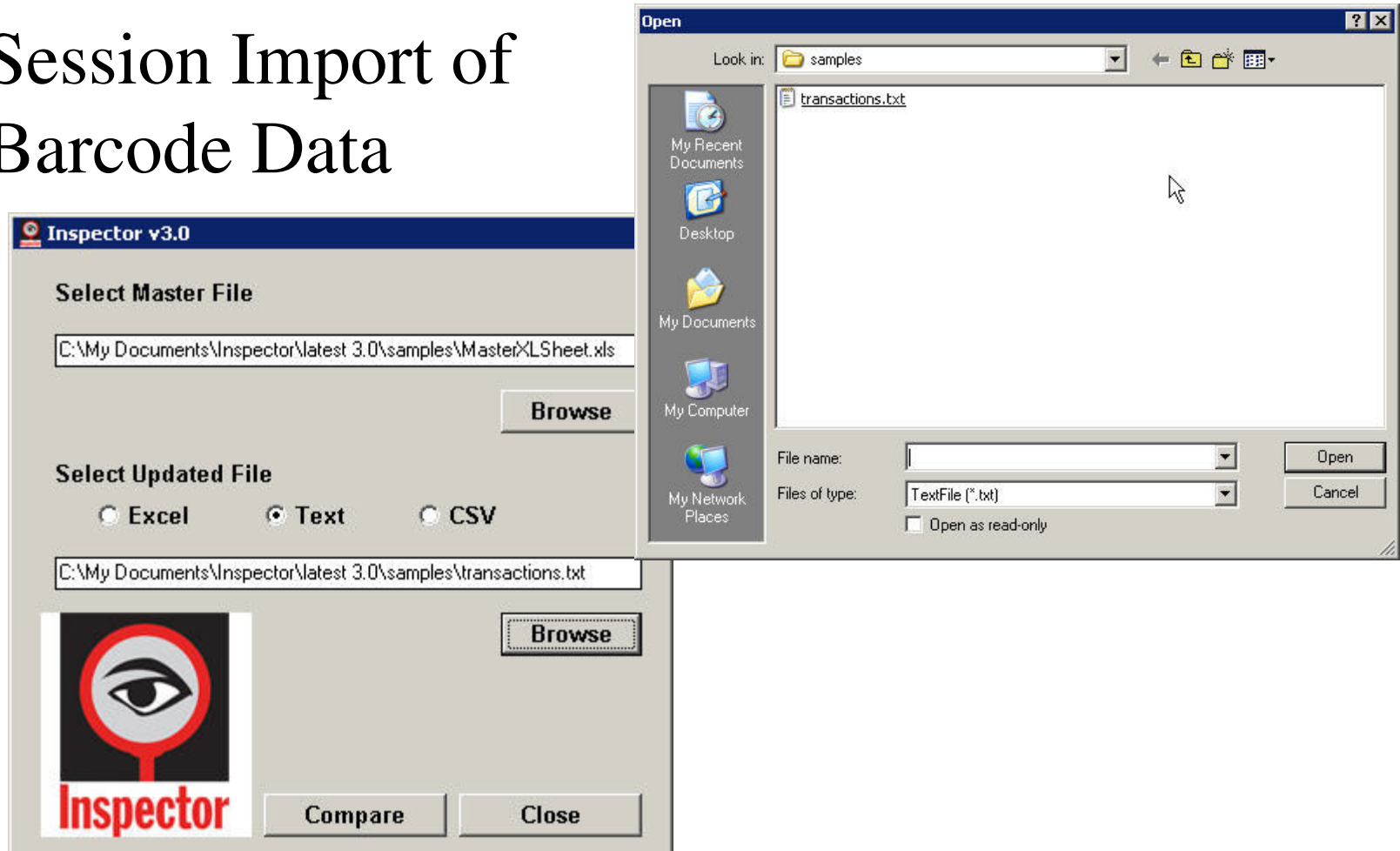


The screenshot displays a Microsoft Excel window titled "Microsoft Excel - MasterXLSheet.xls". An "Open" dialog box is overlaid on the spreadsheet, showing the "samples" folder containing the file "MasterXLSheet.xls". The dialog box includes a "File name" field, a "Files of type" dropdown set to "Spreadsheets (\*.xls)", and an "Open as read-only" checkbox. The spreadsheet below shows a table with columns for Location, Barcode, Status, Date, Time, Description, Mfg, Model, Type, and Size. The data rows show equipment details for various locations and dates.

	A	B	C	D	E	F	G	H	I	J
1	<b>Location</b>	<b>Barcode</b>	<b>Status</b>	<b>Date</b>	<b>Time</b>	<b>Description</b>	<b>Mfg</b>	<b>Model</b>	<b>Type</b>	<b>Size</b>
2	B1234	122345611	Good	5/6/2006	11:00:00	Fire Ext.	Kidde	FW100	Dry Chem	10 lb
3	B1235	122345622	Good	5/7/2006	12:00:00	Fire Ext.	Kidde	FW200	Dry Chem	20 lb
4	B1236	122345633	Good	5/8/2006	13:00:00	Fire Ext.	Kidde	FW200	Dry Chem	20 lb
5	B1237	122345644	Good	5/9/2006	14:00:00	Fire Ext.	Kidde	FW200	Dry Chem	20 lb
6	B1238	122345655	Good	5/10/2006	15:00:00	Fire Ext.	Kidde	FW200	Dry Chem	20 lb
7	B1239	122345666	Good	5/11/2006	16:00:00	Fire Ext.	Kidde	FW300	Dry Chem	30 lb

# Import Barcode Data

- Session Import of Barcode Data



# Results of Import

- After the import of the barcode data, all changes are set in bold and displayed at the top of the spreadsheet.
- If a location, status or date and time changes then the results can be quickly viewed.

	A	B	C	D	E	F	G	H	I	
1	<b>Location</b>	<b>Barcode</b>	<b>Status</b>	<b>Date</b>	<b>Time</b>	<b>Descriptio</b>	<b>Mfg</b>	<b>Model</b>	<b>Type</b>	<b>Size</b>
2	B1236	122345633	<b>Need Ser</b>	6/20/2006	12:00:00 PM	Fire Ext.	Kidde	FW200	Dry Chem	20 lb
3	<b>B1234</b>	122345655	Good	6/20/2006	12:00:50 PM	Fire Ext.	Kidde	FW200	Dry Chem	20 lb
4	<b>B1235</b>	122345611	<b>Need Ser</b>	6/20/2006	12:01:35 PM	Fire Ext.	Kidde	FW100	Dry Chem	10 lb
5	B1243	122345600	Good	6/20/2006	12:05:03 PM	Fire Ext.	Kidde	FW100	Dry Chem	10 lb
6	B1242	122345699	<b>Need Ser</b>	6/20/2006	12:06:07 PM	Fire Ext.	Kidde	FW100	Dry Chem	10 lb
7	<b>T1212</b>	<b>F100000000</b>	<b>BAD</b>	12/24/2006	12:06:07 PM					
8	B1235	122345622	Good	5/7/2006	12:05:00 AM	Fire Ext.	Kidde	FW200	Dry Chem	20 lb
9	B1237	122345644	Good	5/9/2006	2:00:00 PM	Fire Ext.	Kidde	FW200	Dry Chem	20 lb
10	B1239	122345666	Good	5/11/2006	4:00:00 PM	Fire Ext.	Kidde	FW300	Dry Chem	30 lb

# Results-Removed from Location

---

- If items were removed from a location then this shows up on a separate spreadsheet tab.
- Eliminated locations or equipment from that area could pose a special problem. Inspector alerts you to this.

Eliminated Locations

	A	B	
1	<b>Location</b>	<b>Barcode</b>	<b>St</b>
2	B1234	122345611	N/
3	B1238	122345655	N/



# Barcode Scanning – Options

- You may also load the barcode reader with a lookup table to alert inspector when scanning equipment and conducting inspections.
- Lookups alert inspector to perform special inspections on equipment such as hydro tests.

L
<b>Hydro Date</b>
5/1/2014-Hydro
5/1/2014-Hydro
11/1/2006-Hydro
11/1/2006-Hydro
5/1/2014-Hydro
5/1/2014-Hydro
5/1/2014-Hydro
5/1/2014-Hydro
5/1/2014-Hydro
4/1/2008-Hydro
5/1/2014-Hydro

	A	↓B
1	122345611	11/1/2006-6yr. Test
2	122345655	11/1/2006-6yr. Test
3	122345666	11/1/2006-6yr. Test
4	100000000	11/1/2006-6yr. Test



# Import Data to Other Programs

---

- Import data for use with other programs using standard Microsoft techniques.
- View or use graphs if necessary using Excel analysis techniques.



# Fast and Easy Inspections

---

- Barcodes make inspections fast and easy. Inspector uses simple barcode readers for collecting data.
- Inspector is Excel-based. Excel takes the hassle out of inspections leaving the basis of easily understood inspections.



# Support

---

- MSS Software offers technical support for Inspector software.
- We are available 8:30 am to 5:30 pm, Monday thru Friday, EST.

